





Broadband Availability in New Hampshire (Preliminary Results)

Broadband Access by Type of Technology

-  Cable Modem
-  DSL
-  Fixed Wireless
-  Mobile Wireless

The map displays broadband access information provided to the NH Broadband Mapping Program (NHBMP) as of May 31, 2010. All data provided are being reported at the census block level.

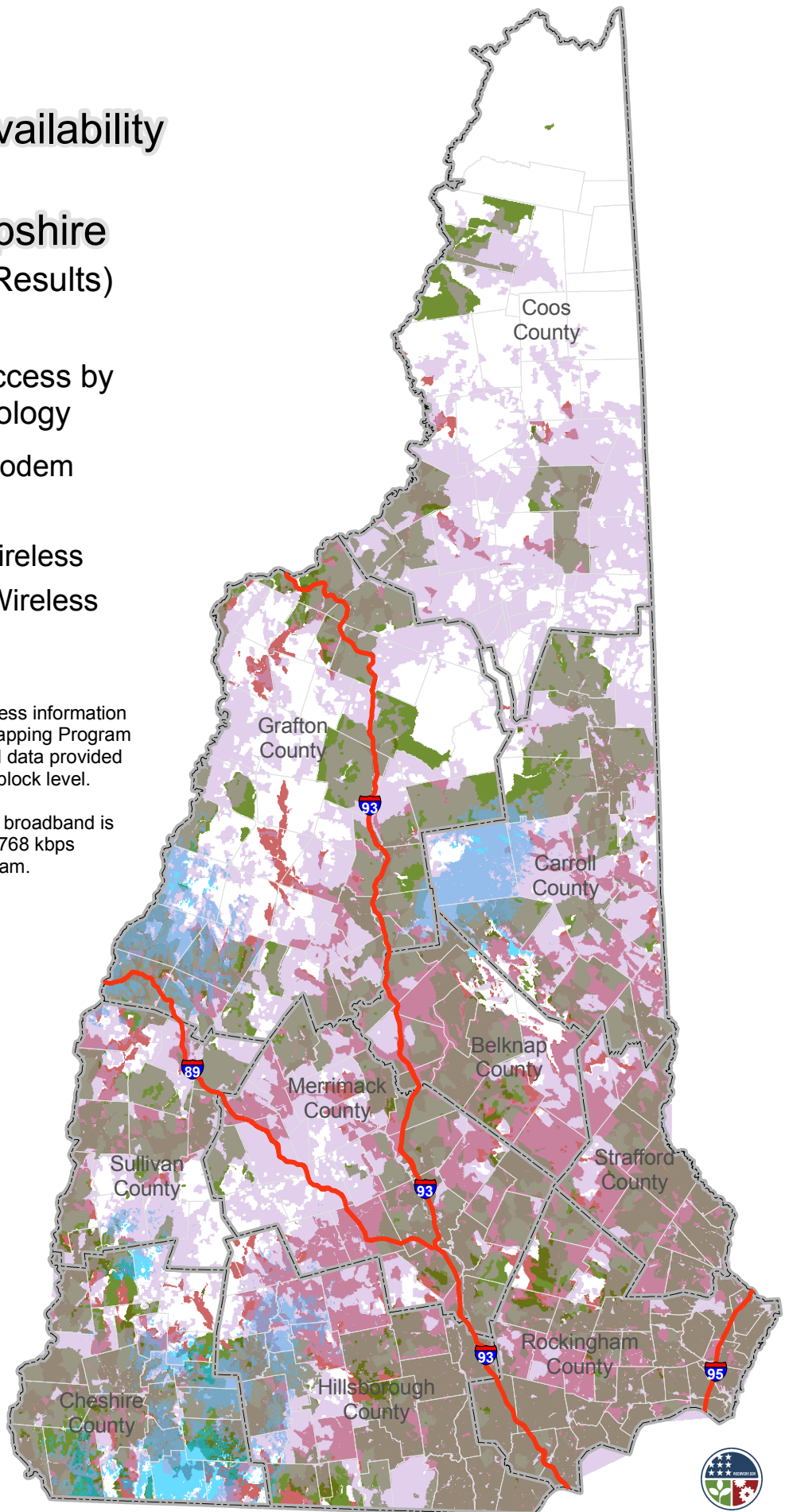
For the purposes of this program, broadband is defined as access that is at least 768 kbps downstream and 200 kbps upstream.

The NHBMP is part of the National Telecommunications and Information Administration's (NTIA) national effort to map broadband availability in all 50 states, the 5 territories, and the District of Columbia.

Please visit the NHBMP web site:
iwantbroadbandnh.org



New Hampshire Broadband
Mapping Program



May, 2010