
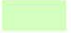








NH Broadband Mapping & Planning Program: Consumer - Technology Offering the Maximum Advertised Download Speeds

Transfer Technology

-  DSL
-  Cable
-  Optical Carrier / Fiber to the end user
-  Satellite
-  Terrestrial Fixed Wireless

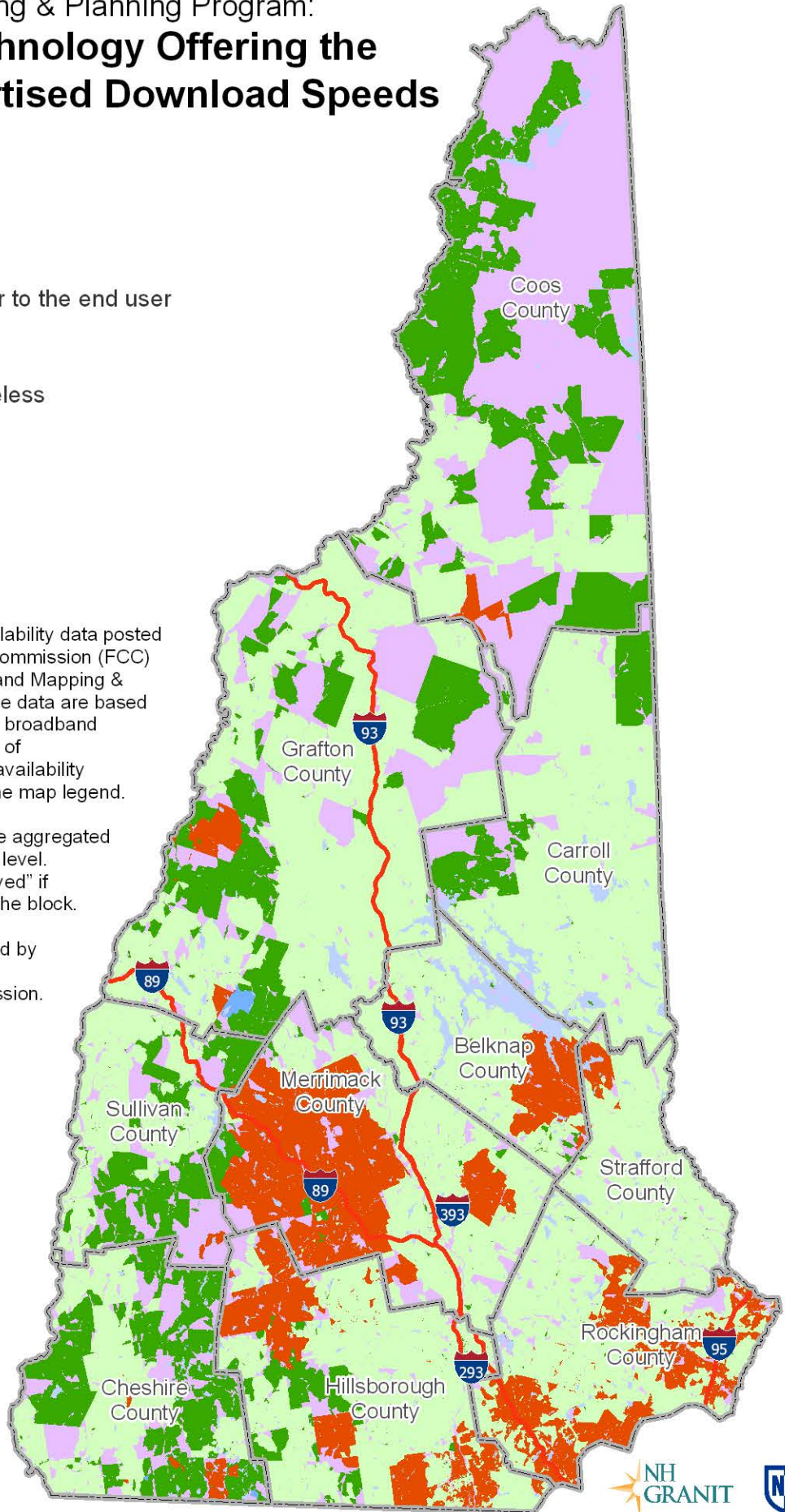
Other Features

-  County boundary
-  Interstate
-  Lakes and ponds

This map displays broadband availability data posted by the Federal Communications Commission (FCC) and processed by the NH Broadband Mapping & Planning Program (NHBMPP). The data are based on FCC Form 477 submissions by broadband providers, represent availability as of June 30, 2016 (v2), and describe availability across the technologies listed in the map legend.

For mapping purposes, all data are aggregated and displayed at the census block level. A census block is mapped as "served" if service is delivered to any part of the block.

The NHBMPP is partially supported by grant #NBRC16GNH11 from the Northern Border Regional Commission.



Please visit the NHBMPP web site at:
iwantbroadbandnh.org